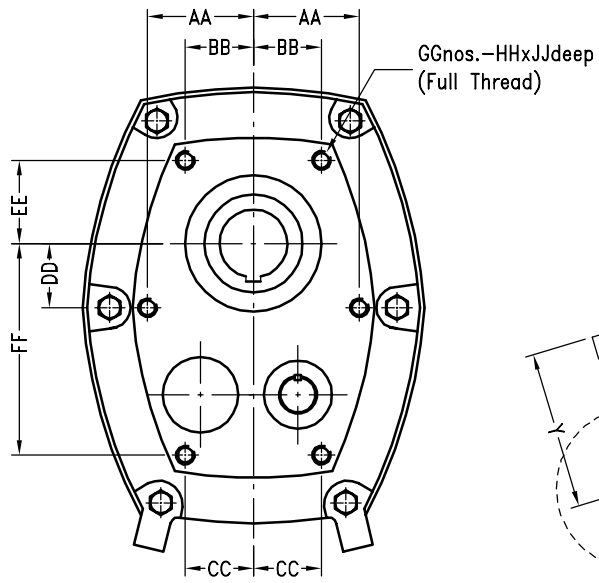

SHAFT MOUNTED SPEED REDUCER

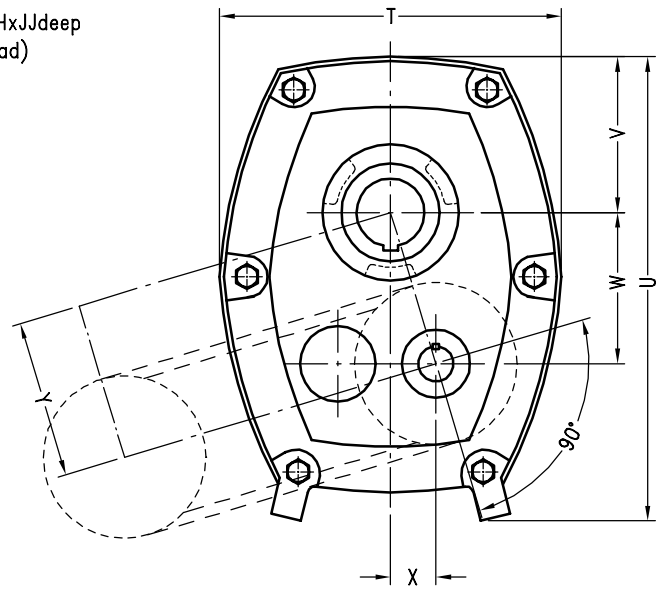


*Gearing the
Wheels of Success*

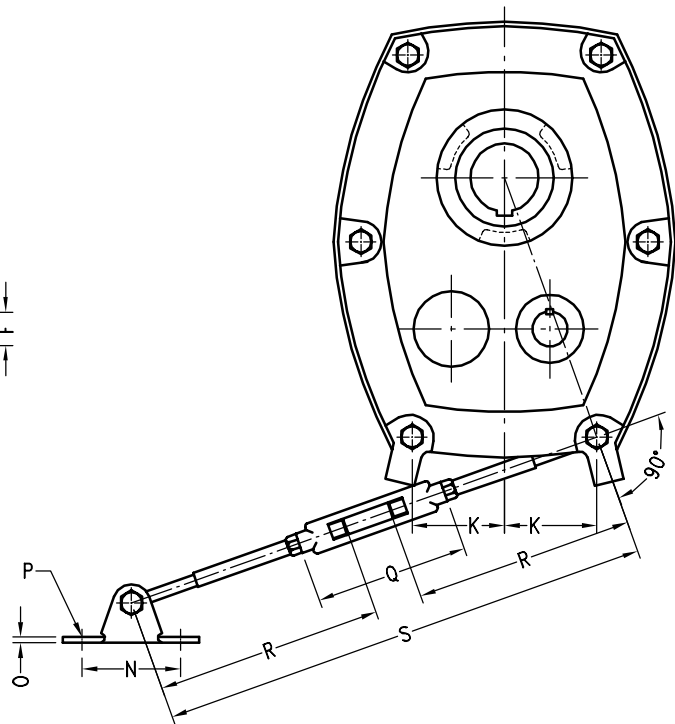
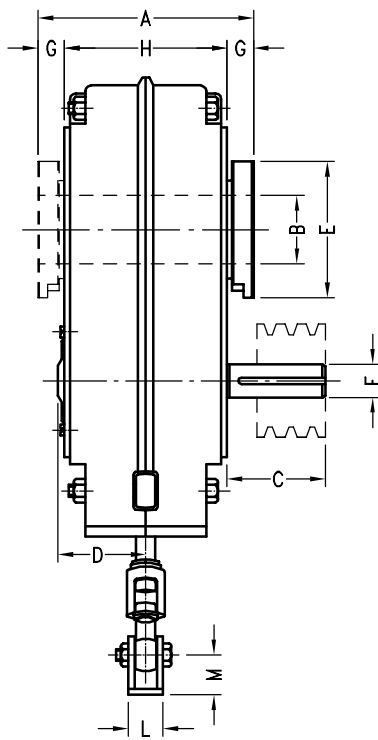




FLANGE MOUNTED



SHAFT MOUNTED



SHAFT MOUNTED REDUCER - DIMENSIONS

Dimension	SMR (Size)								
	B	C	D	E	F	G	H	J	
A	134	142	152	170	189	212	242	257	
B	30	40	50	55	65	75	85	100	
Output Hub Key	8x7	12x8	14x9	16x10	18x11	20x12	22x14	28x16	
C	63	72	77	85	90	105	116	135	
D	59	65	68	76	87	110	115	119	
E	80	90	100	115	130	145	170	200	
F	19	22	25	28	32	42	48	55	
Input Shaft Keyway	6x3.5x50	6x3.5x59	8x4x63	8x4x70	10x5x70	12x5x90	14x5.5x100	16x6x100	
G	15	17	17	20	20	20	26	30	
H	104	108	118	130	149	172	190	197	
J	131	156	188	222	242	277	330	424	
K	55	59	76	90	98	110	88	102	
L	24	24	28	28	34	34	70	70	
M	20	20	24	24	30	30	50	50	
N	65	65	75	75	100	100	120	120	
O	5	5	5	5	6	6	18	18	
P	10	10	12	12	16	16	16	16	
Q	200	200	216	216	216	216	222	222	
R	300	300	350	350	375	375	375	375	
S*	Min	600	600	700	700	750	750	750	750
	Max	750	750	850	850	900	900	900	900
T	186	218	258	278	317	365	434	542	
U	241	282	338	386	419	475	550	700	
V	81	96	117	129	143	162	195	254	
W	75	90	110	125	141	156	189	255	
X	25	31	37	43	50	56	62	75	
Y	79	95	116	133	150	166	200	266	
AA	53	--	--	90	100	115	150	200	
BB	34	40	50	57	67	74	64	74	
CC	--	44	59	57	76	86	79	--	
DD	33	40	48	61	64	74	81	98	
EE	41	52	61	62	76	87	122	164	
FF	--	132	155	188	197	224	281	330	
GG	4	4	4	6	6	6	6	5	
HH	M8	M10	M12	M12	M16	M16	M20	M20	
JJ	15	15	17	18	19	24	29	32	
Weight (kg)	5:1	15	21	30	41	53	82	133	194
	13-20:1	16	22	32	46	58	92	144	208
Nominal Ratios		Exact Gear Ratios							
5:1		5.050	5.050	5.047	5.047	5.047	5.047	5.047	5.047
13:1		13.984	13.596	13.589	13.589	13.589	13.589	13.589	13.589
20:1		20.466	20.456	20.456	20.456	20.456	20.456	20.456	20.456

* - Permits 150mm adjustments to tighten V-Belts. By cutting off threaded end of rods, 'S' may be reduced by up to 300mm on sizes B & C, 350mm on D & E and 395mm on sizes F, G, H & J.

POWER RATING TABLE (kW)

Input (rpm)	Output (rpm)	SMR (Size)							
		B5	C5	D5	E5	F5	G5	H5	J5
750	150	3.62	5.78	8.30	13.13	19.22	33.60	47.30	81.90
1000	200	4.20	6.49	9.45	14.91	22.05	37.80	53.60	96.60
1500	300	5.46	7.98	12.08	19.43	27.83	47.40	66.20	118.70

Input (rpm)	Output (rpm)	SMR (Size)							
		B13	C13	D13	E13	F13	G13	H13	J13
750	58	1.64	2.61	4.43	6.66	10.02	16.80	25.80	38.00
1000	77	2.15	3.32	5.70	8.97	12.92	22.26	33.60	49.20
1500	115	3.11	4.62	7.81	11.55	17.01	27.09	40.70	60.50

Input (rpm)	Output (rpm)	SMR (Size)							
		B20	C20	D20	E20	E20	G20	H20	J20
750	38	1.10	1.79	2.91	4.48	7.05	11.12	17.40	27.60
1000	50	1.42	2.30	3.78	5.81	9.07	14.60	22.80	35.00
1500	75	2.06	3.18	5.42	8.54	12.39	21.11	32.00	47.00



Admin. Office:

P. O. Box 18701, 32/A, Vidyavilla Comp., Old Nagardas
 Road, Andheri (East), Mumbai 400069.
 Tel.: 2838 0080, 2838 0081, 2836 0651, 2820 1316.
 Fax: 022-28380947. Email: gearsales@hindmotors.com
 Website: www.hindmotors.com

Authorised Dealer: